

## RESEARCH STUDY

# DO YOU HAVE AN INFLAMMATORY ARTHRITIS? WE NEED YOUR HELP

### What is the research about?



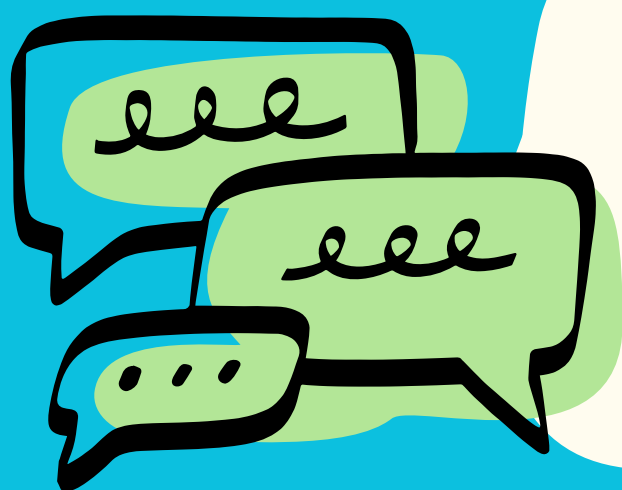
We want to interview a wide range of people with inflammatory arthritis to ask for their views on supportive and palliative care. This is the care you may receive from health professionals as you live life with an inflammatory arthritis, and care you may receive towards the end of your life.

### Why are we doing this research?

This research aims to improve understanding of how supportive and palliative care can help people with inflammatory arthritis live well throughout the course of their condition. Recommendations will be made which may support health care professionals to offer this care in the future.



### What does taking part involve?



If you decide to take part, we will invite you to be interviewed by a member of the study team. The interview will be arranged at a time to suit you and will be conducted via MS Teams if you have access to a computer, or via telephone.

### Am I eligible to take part?

You can take part in this research study if you:

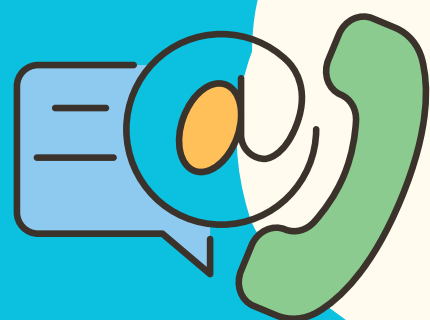
- Are 18 years or over
- Have a diagnosis of Rheumatoid Arthritis, Psoriatic Arthritis, Juvenile Idiopathic Arthritis or Axial Spondyloarthritis (such as Ankylosing Spondylitis)
- You can take part whether or not you are receiving palliative care



We welcome people from a range of cultural backgrounds.



### I am interested in taking part, so how do I find out more?



Please email Dr Sharon Grieve, Research Fellow at Dorothy House Hospice Care for further information: [research@dorothyhouse-hospice.org.uk](mailto:research@dorothyhouse-hospice.org.uk) or telephone on: 01225 967504